

SOUNDTRACK

COLLECTION



01.

RHYTHMIC VARIATIONS

Ambient, Folk and HardRock provide different pattern intensity, from gentle and delicate to intense and vibrant.

02.

GRAPHIC WAVE

Like in music, Soundtrack Collection offers **different variations on the same theme** offering **nine colors** for each style.

03.

SHARP NOISE

The **pattern design** has been treated as a series of scratches over a pure surface, just like **notes over the silence**.

VOXFLO[®]
Your color story

01.

OUR GOAL

Soundtrack Collection is like the musical theme playing in the background. It's the **visual accompaniment of our daily life**. It fills with **harmony** the flat flooring surface, with **little passionate accents** here and there, gentle and delicate when it's about **Ambient**, rapid and vivid with **Folk**, stronger and vibrant for **HardRock**. Just follow the rythm and **play with us!**

VOXFLO
MILANO CREATIVE STUDIO



02.

COLLECTION

Play and pause over three different frequencies creates **unique patterns** in which the sequence of solids and voids are perfectly balanced **just like into a melody.**

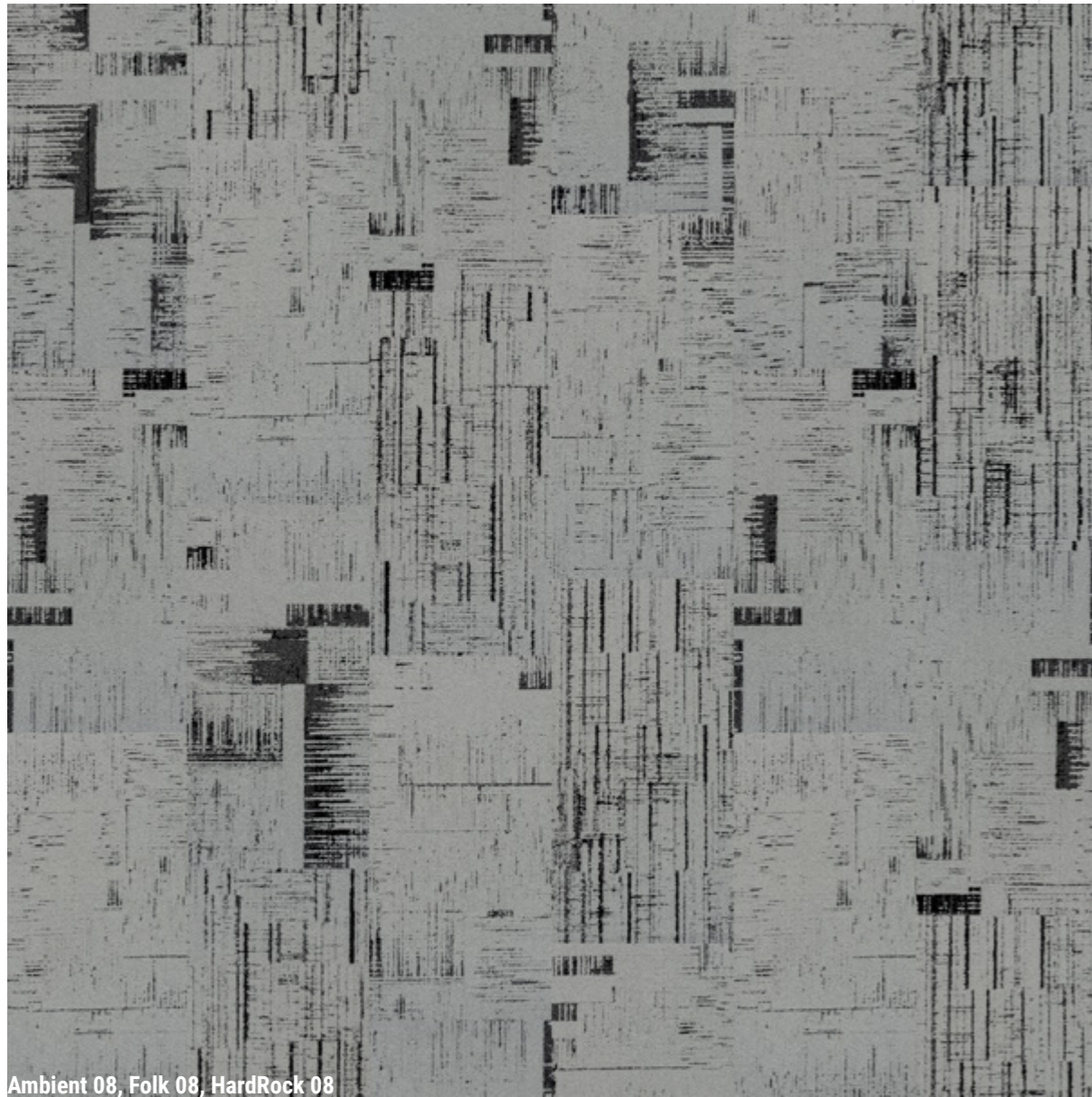
SOUNDTRACK GOOD VIBES ONLY

While HardRock provides a stronger rhythmic sequence in which peaks are higher and breaks are shorter, Folk is more balanced and the acoustics more linear whereas Ambien is quiet and its accents stay in a more stable range.





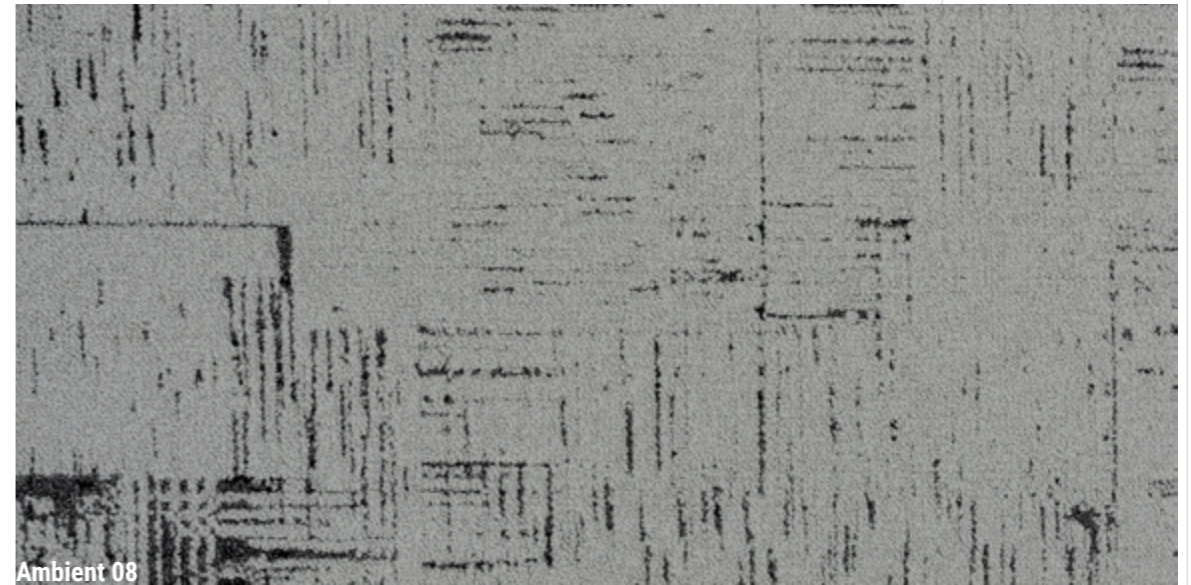
Ambient 08, Folk 08, HardRock 08



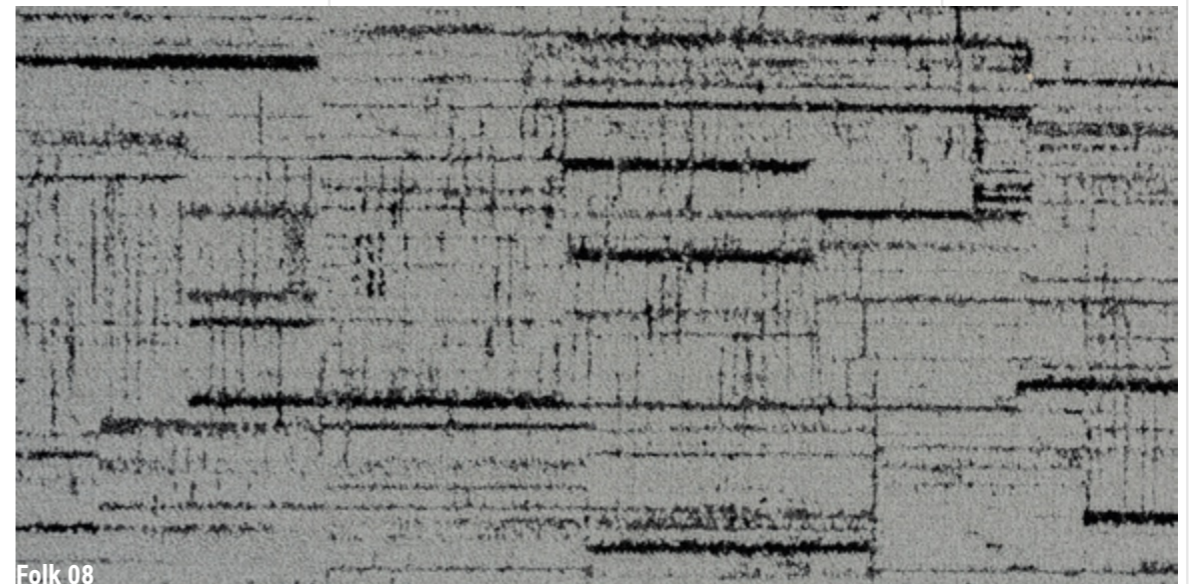
Ambient 08, Folk 08, HardRock 08



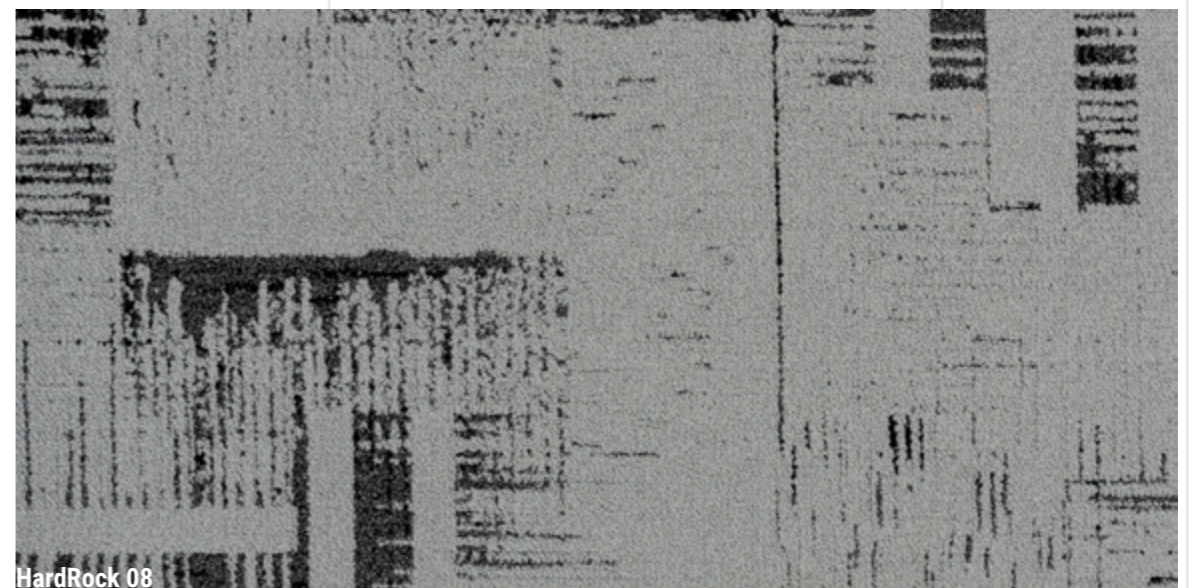
To create a **great symphony**, the different products of the Collection **can be even mixed up together**, creating a unique and **stylish pattern** design to satisfy any possible creative needs.



Ambient 08



Folk 08



HardRock 08



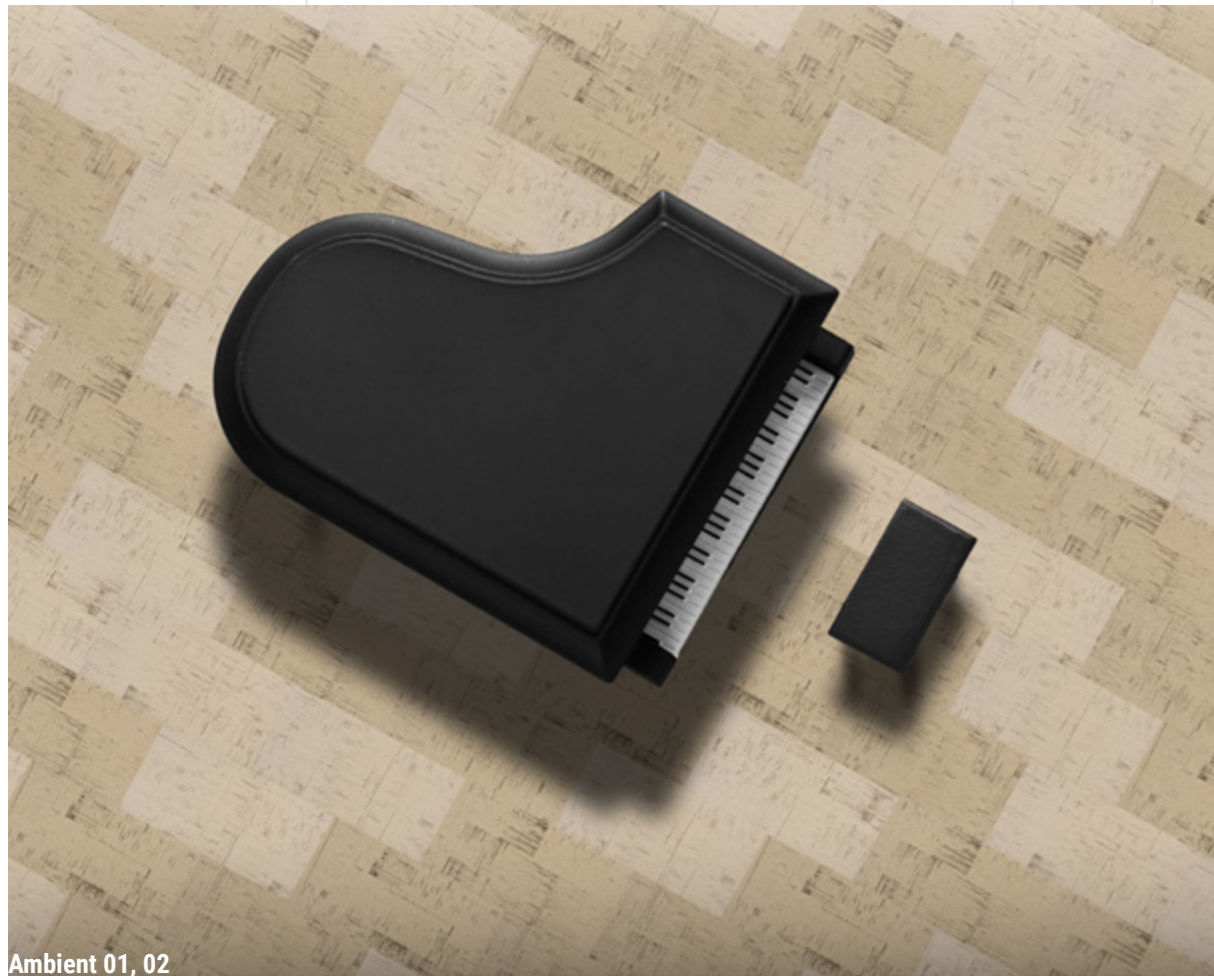
Gentle scratches over a plain base creates **delicate accents**, which provides a barely hinted **scene movement**.

Soft, elegant, and classical, Ambient is the perfect neutral background for representative spaces, high class lounge and corporate offices.

AMBIENT

ELEGANT ATMOSPHERE





Ambient 01, 02



Ambient 01



Ambient 02



Ambient 07



Ambient 03, 06



Ambient 01



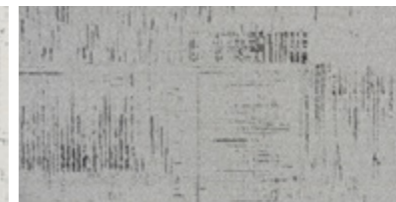
Ambient 02



Ambient 03



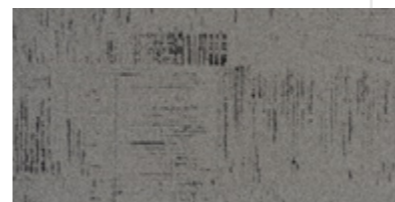
Ambient 04



Ambient 05



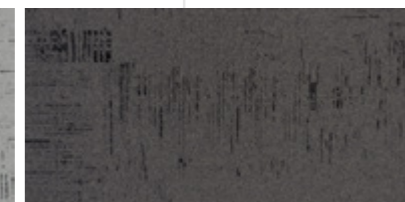
Ambient 06



Ambient 07



Ambient 08

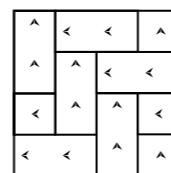


Ambient 09

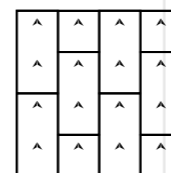
Specifications

Style Name:	Ambient
Construction:	Multi-level Loop
Fiber:	ECONYL® Regenerated Nylon by Aquafil
Gauge:	1/10"
Stitches:	10 per inch
Pile Weight:	28 OZ/yd ²
Average Pile Height:	5.0 ± 0.5mm
Backing:	EcoAce-Bac® pro
Tile size:	50cm*100cm
Area of Use:	Commercial – Heavy Duty
Anti-microbial:	Ultra-Fresh Treatment (Available)
Flammability:	ASTM E 648 Class I, GB8624-2012 B1(C)
Smoke Density:	ASTEM E 662 Less than 450, GB/T 8627-1999
Static Propensity:	AATCC-134≤3.5 KV, GB/T 18044-2008

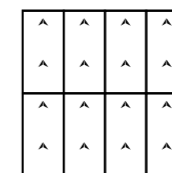
Installation Methods



Herringbone



Ashlar



Monolithic



FOLK

CONTEMPORARY STYLE

Straight and direct accents get crossed by perpendicular lines every once, **stopping** at times and then **resuming** with a **pressing rhythm**.

Dynamic and progressive, with a linear pattern design, can find its natural dimension in hotel corridors and bedrooms, receptions, and private offices.

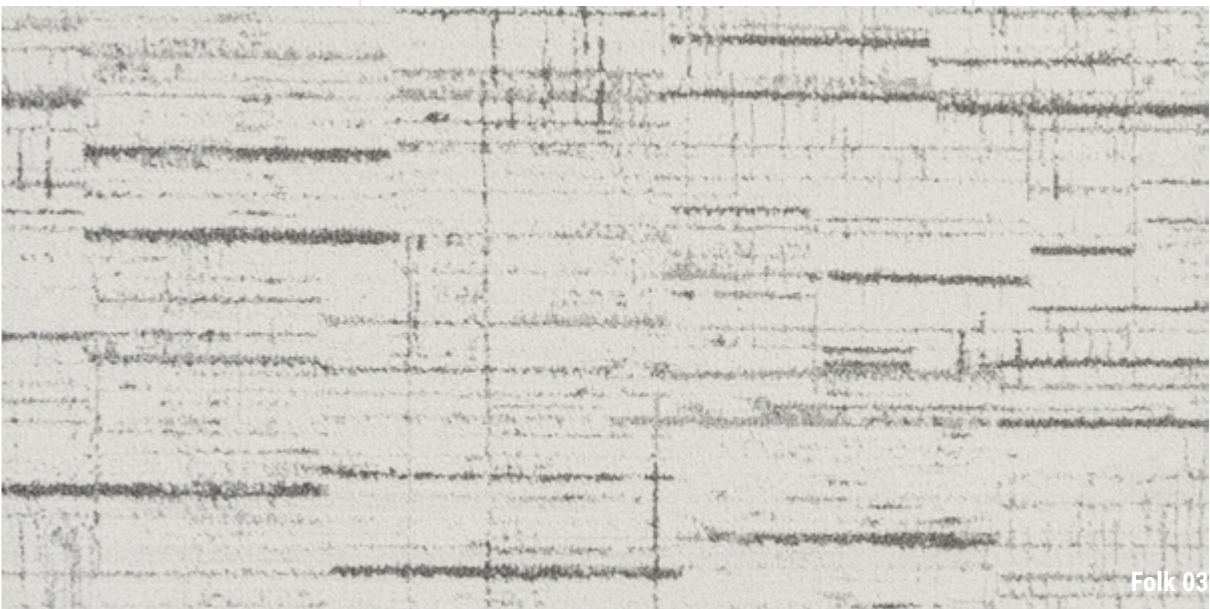




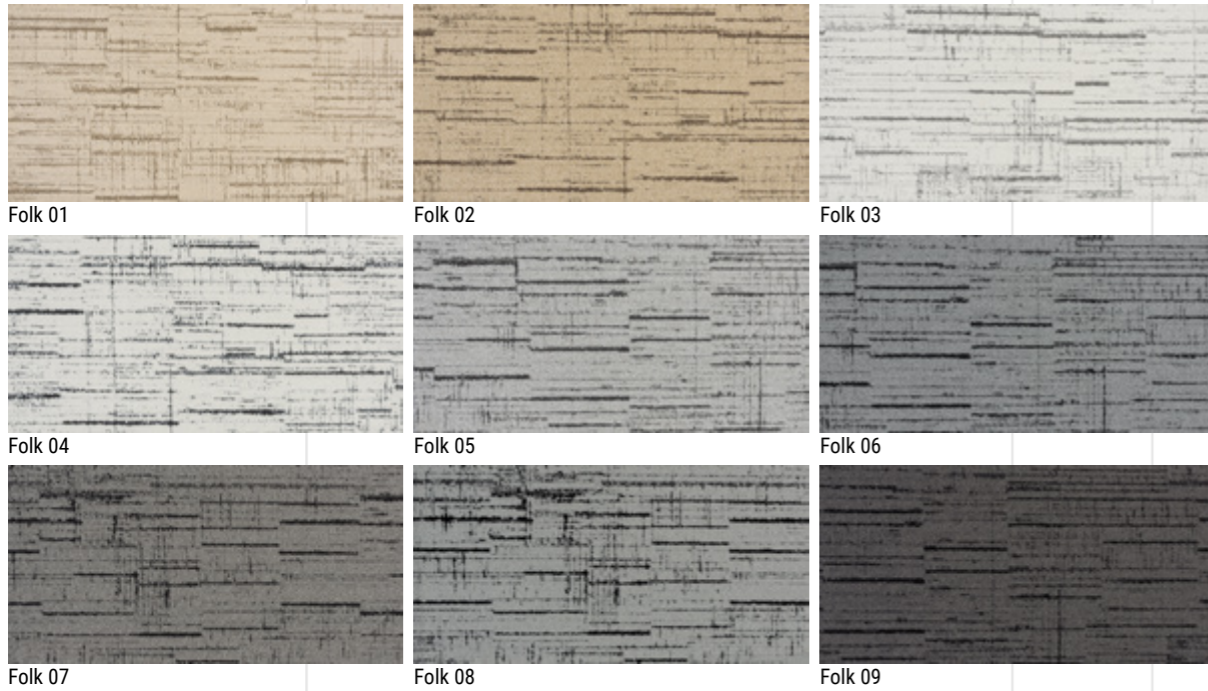
Folk 01, 02



Folk 03 + 08



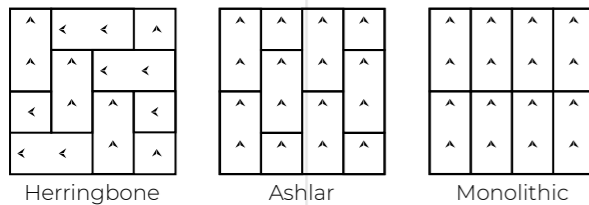
Folk 03



Specifications

Style Name:	Folk
Construction:	Multi-level Loop
Fiber:	ECONYL® Regenerated Nylon by Aquafil
Gauge:	1/10"
Stitches:	10 per inch
Pile Weight:	28 OZ/yd ²
Average Pile Height:	5.0 ± 0.5mm
Backing:	EcoAce-Bac® pro
Tile size:	50cm*100cm
Area of Use:	Commercial – Heavy Duty
Anti-microbial:	Ultra-Fresh Treatment (Available)
Flammability:	ASTM E 648 Class I, GB8624-2012 B1(C)
Smoke Density:	ASTEM E 662 Less than 450, GB/T 8627-1999
Static Propensity:	AATCC-134≤3.5 KV, GB/T 18044-2008

Installation Methods



Folk 01, 02, 04



With such a **vibrant graphic pattern**, HardRock provides a **high frequency** and **dense design** approach to the flooring composition.

Since its stronger impact it would perfectly fit all those areas with high intensity activities such as office meeting rooms, gathering spaces and hotels ballrooms.

HARDROCK

TOUGH TASTE

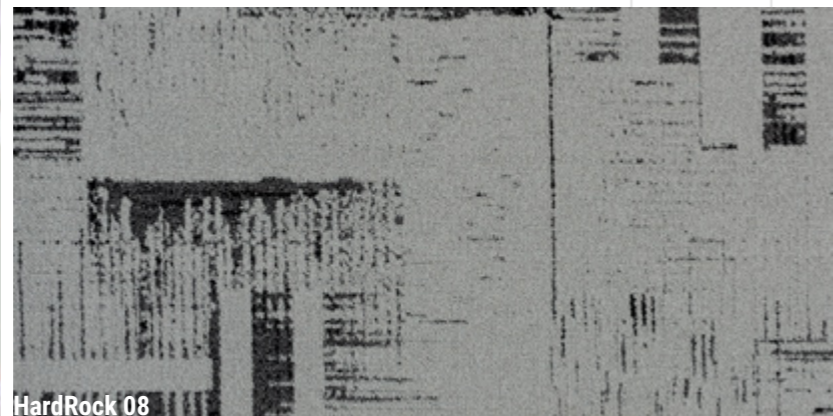




HardRock 06, 08



HardRock 06



HardRock 08



HardRock 05, 07



HardRock 01



HardRock 02



HardRock 03



HardRock 04



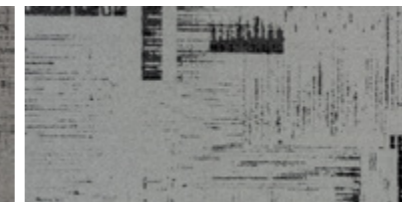
HardRock 05



HardRock 06



HardRock 07



HardRock 08

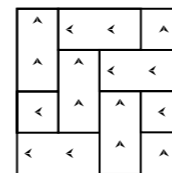


HardRock 09

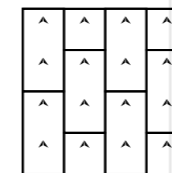
Specifications

Style Name:	HardRock
Construction:	Multi-level Loop
Fiber:	ECONYL® Regenerated Nylon by Aquafil
Gauge:	1/10"
Stitches:	10 per inch
Pile Weight:	28 OZ/yd ²
Average Pile Height:	5.0 ± 0.5mm
Backing:	EcoAce-Bac® pro
Tile size:	50cm*100cm
Area of Use:	Commercial – Heavy Duty
Anti-microbial:	Ultra-Fresh Treatment (Available)
Flammability:	ASTM E 648 Class I, GB8624-2012 B1(C)
Smoke Density:	ASTEM E 662 Less than 450, GB/T 8627-1999
Static Propensity:	AATCC-134≤3.5 KV, GB/T 18044-2008

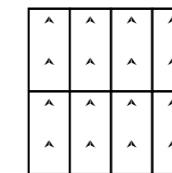
Installation Methods



Herringbone



Ashlar



Monolithic

HardRock 04, 05, 06, 08

Manufacture System

SOLAR

made carpet

VOXFLOOR builds its own solar power generation system and use clean energy to produce in a sustainable way.

Product Further Info



An Environmental Product Declaration (EPD) tells the life cycle story of a product in a single, comprehensive report. The EPD provides information about a product's impact upon the environment, such as global warming potential, smog creation, ozone depletion and water pollution.



CE marking indicates that a product has been assessed by the manufacturer and deemed to meet EU safety, health and environmental protection requirements.

Credits Contribution to:



LEED (Leadership in Energy and Environmental Design) is the most widely used green building rating system in the world. LEED certification is a globally recognized symbol of sustainability achievement and leadership.



EcoAce-Bac®
GLP No. : 100231

Green Label Plus is an independent testing program that identifies carpet, adhesives, and cushion with very low emissions of VOCs to help improve indoor air quality.



VOXFLOOR recommends using its own carpet tile tackifier with rust inhibitor. It is an EC-1 PLUS certified adhesive.



WELL is the leading tool for advancing health and well-being in buildings globally. Register your office, building or other space to leverage WELL's flexible framework for improving health and human experience through design.



Our manufacture system has been certified under ISO 9001, ISO 14001 and ISO 45001, which means with the management, production facility and the strict quality controls, VOXFLOOR® represents qualified and trusty products.



Declare.

Declare is a transparency platform to share and find healthy building products. VOXFLOOR's EcoAce-Bac® Collection reach "Red List Free" grade.



Ultra-Fresh is a portfolio of antimicrobial treatments developed by Thomson Research Associates, Inc. Customer can choose this High-Performance Antimicrobial Technology.



The Living Building Challenge (LBC) is a certification program that defines the most advanced measure of sustainability. It uses the metaphor of a flower because the ideal built environment should function as cleanly and efficiently as a flower.



COMPOSE AND ENJOY THE SOUNDTRACK OF YOUR LIFE





VOXFLOR®

www.voxflor.com

Shanghai **Headquarters**

T +86 021 62989325

Milano **Creative Studio**

T +39 3885863150

China **Branch Offices**

Beijing/ Guangzhou/ Shenzhen/ Xiamen

T 400 021 0790

